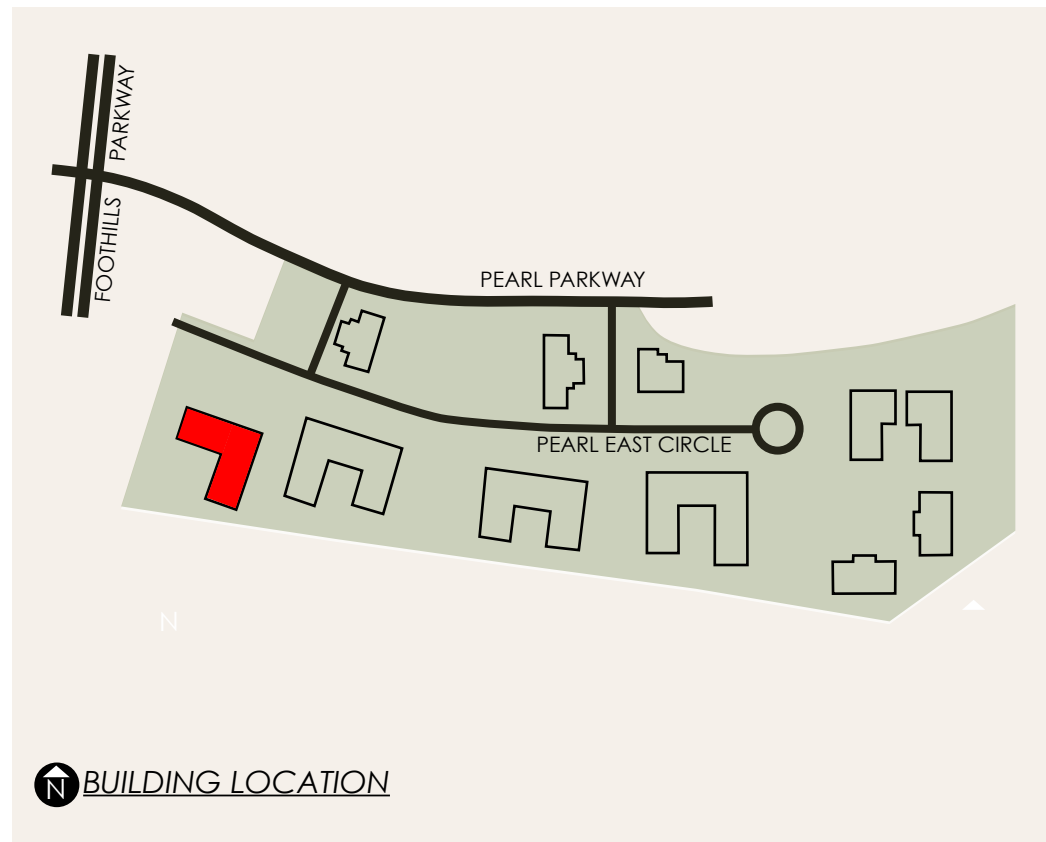


PEARL EAST BUSINESS PARK

4780 PEARL EAST CIRCLE : BOULDER, CO

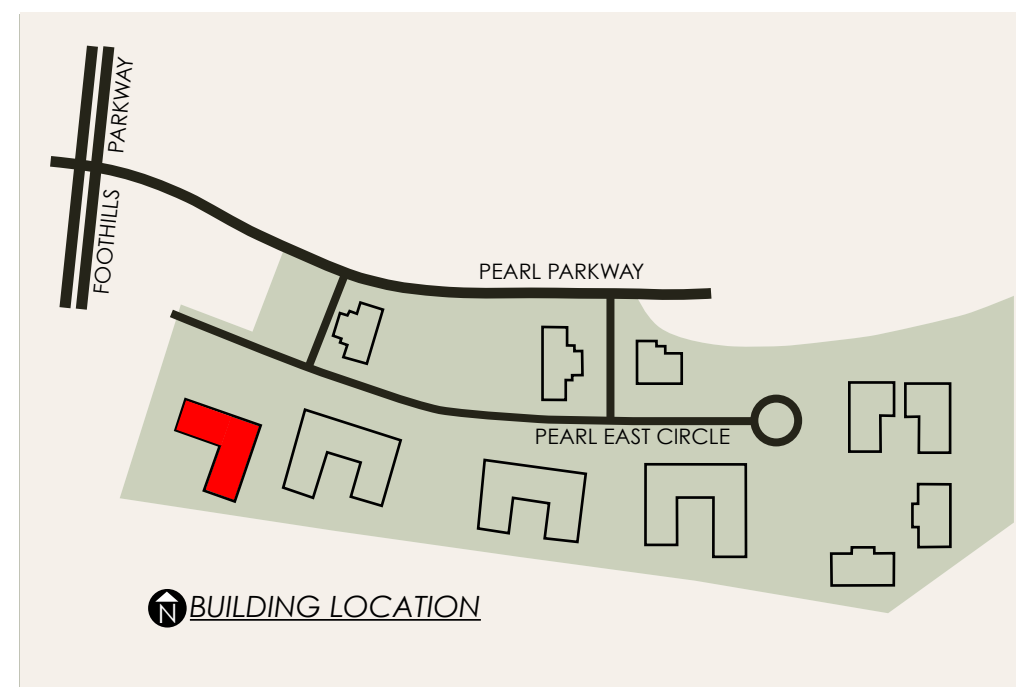
Pearl East Business Park

- Great Central Boulder Location
- Easy access to both downtown Denver & Boulder
- Stunning Flatiron Views
- Abundant Parking



PEARL EAST BUSINESS PARK

4780 PEARL EAST CIRCLE : BOULDER, CO



Chad Henry
chenry@wwreynolds.com

Nate Litsey
nate@wwreynolds.com

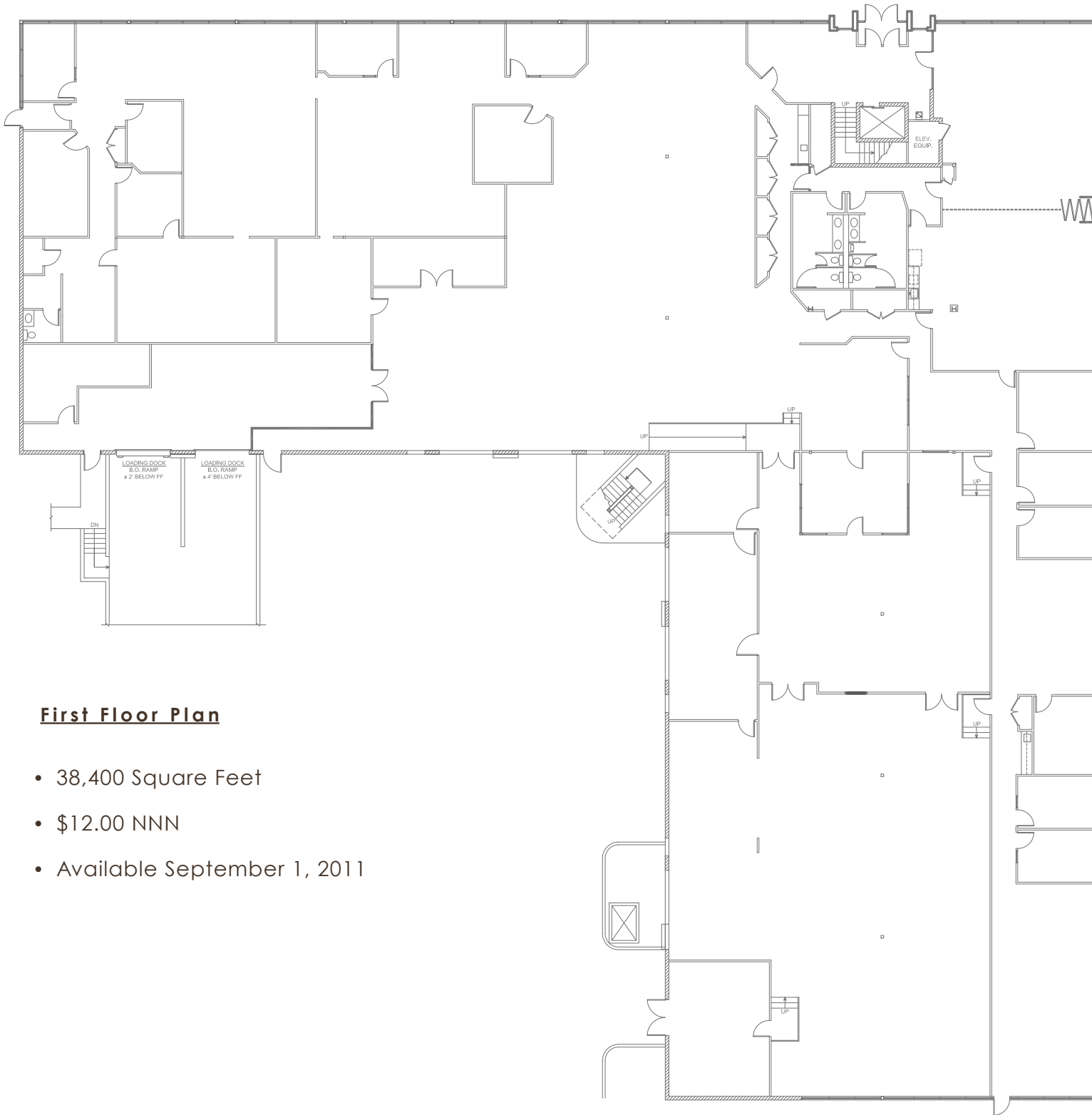
THE *W.W. Reynolds* COMPANIES

1800 Broadway, Suite 210
Boulder, CO 80302
P. 303.442.8687
F. 303.442.8757

Chad Henry
chenry@wwreynolds.com

Nate Litsey
nate@wwreynolds.com

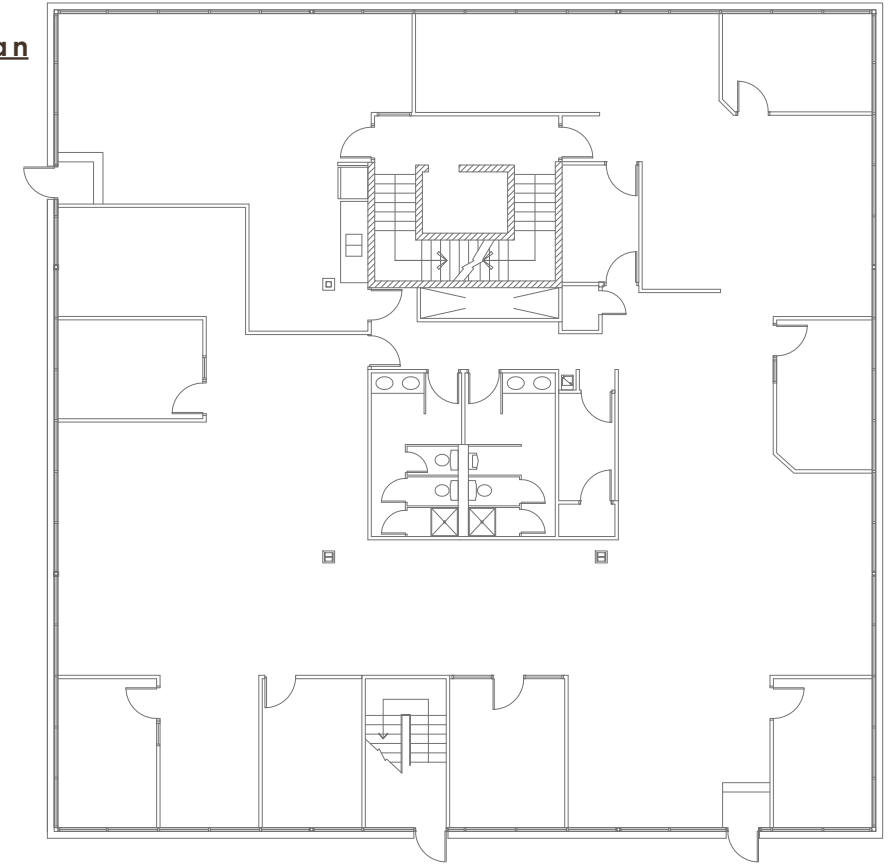
THE *W.W. Reynolds* COMPANIES



First Floor Plan

- 38,400 Square Feet
- \$12.00 NNN
- Available September 1, 2011

Second Floor Plan



Third Floor Plan

